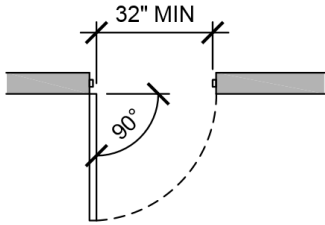


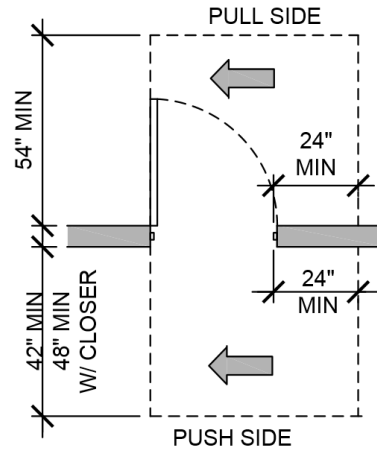
This header space is for local jurisdiction to put their own logo and information

ACCESSIBLE DOORS AND DOORWAYS

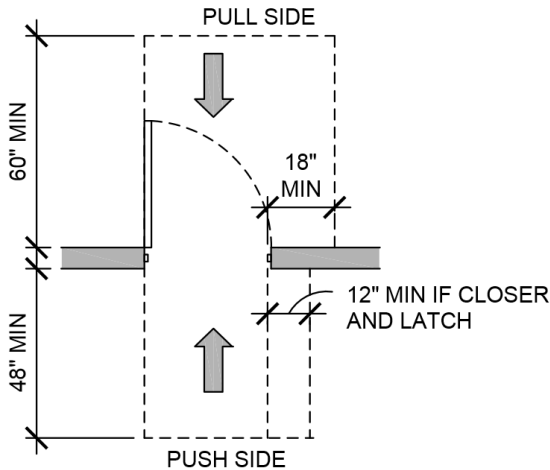


SWINGING DOOR CLEARANCE

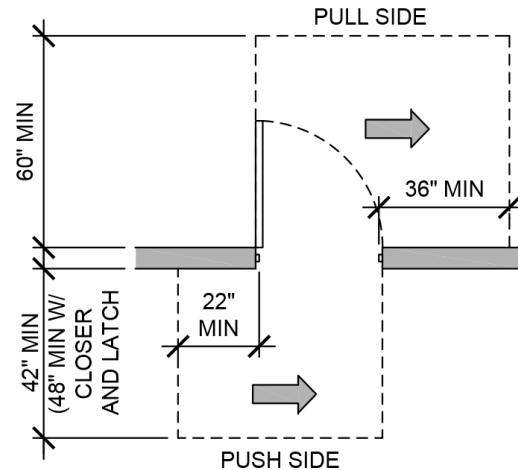
(404.2.2)



LATCH APPROACH



FORWARD APPROACH



HINGE APPROACH

Notes:

1. Based on 2019 Oregon Structural Specialty Code (OSSC) and the 2009 ICC A117.1 Standard (Need to verify compliance with new code/standard).
2. All fixtures, hallways, doors, etc. shall conform to the requirements of OSSC Chapter 11 and ICC A117.1 as applicable. See OSSC Section 1109.12.2 and ICC A117.1 Sections 902, 904.4 and other applicable sections for additional information.